

# Compound Semiconductors in South Wales

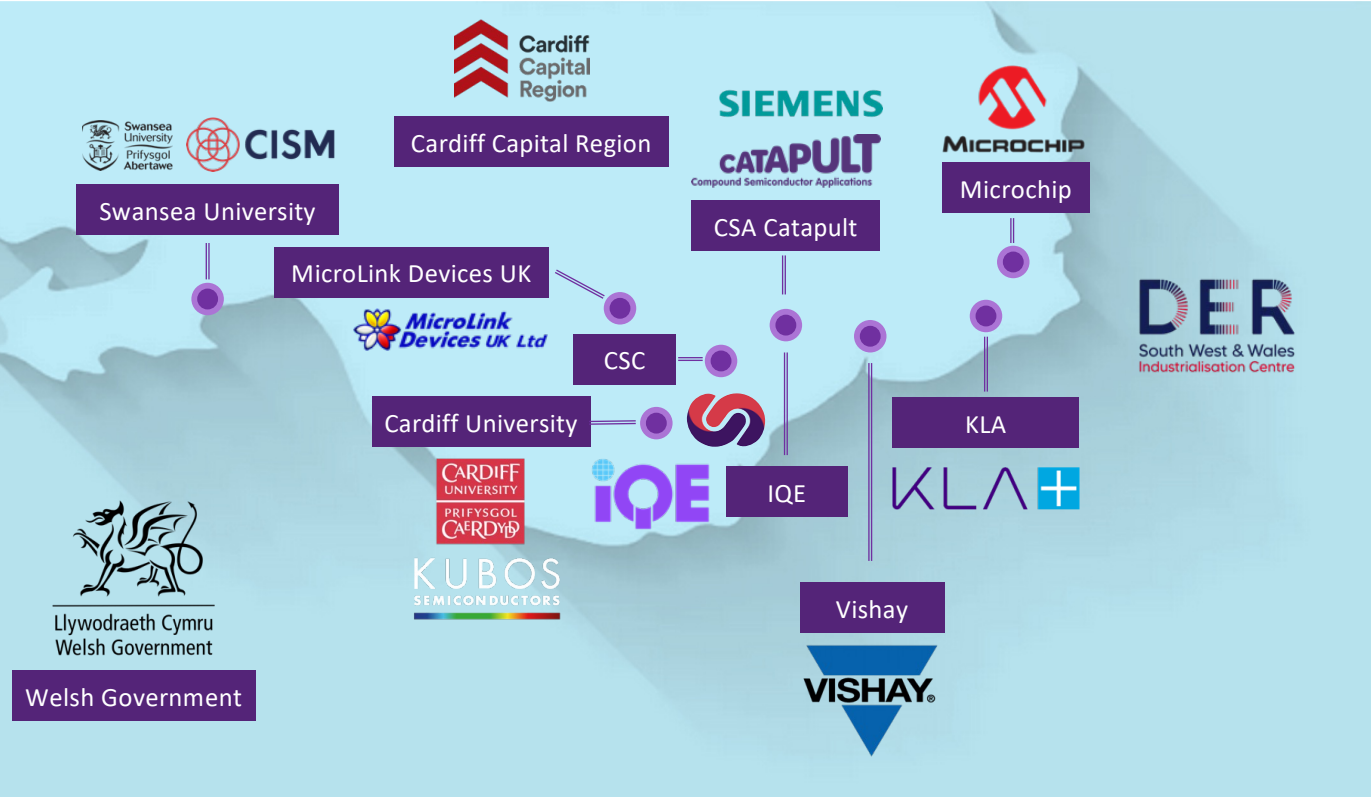
*Photonics Leadership Group Meeting - May 8<sup>th</sup> 2025*



# Cluster Scope & Impact

## Key Metrics\*

- **Approx. 3000 People employed by cluster-related companies (32% growth since 2020)**
- **Over £350M in GVA contribution (over 3X National Average)**
- **Over £500M in annual sales (90%+ export)**



# Evolution of the Cluster

Key milestones toward a \$1B Technology Community

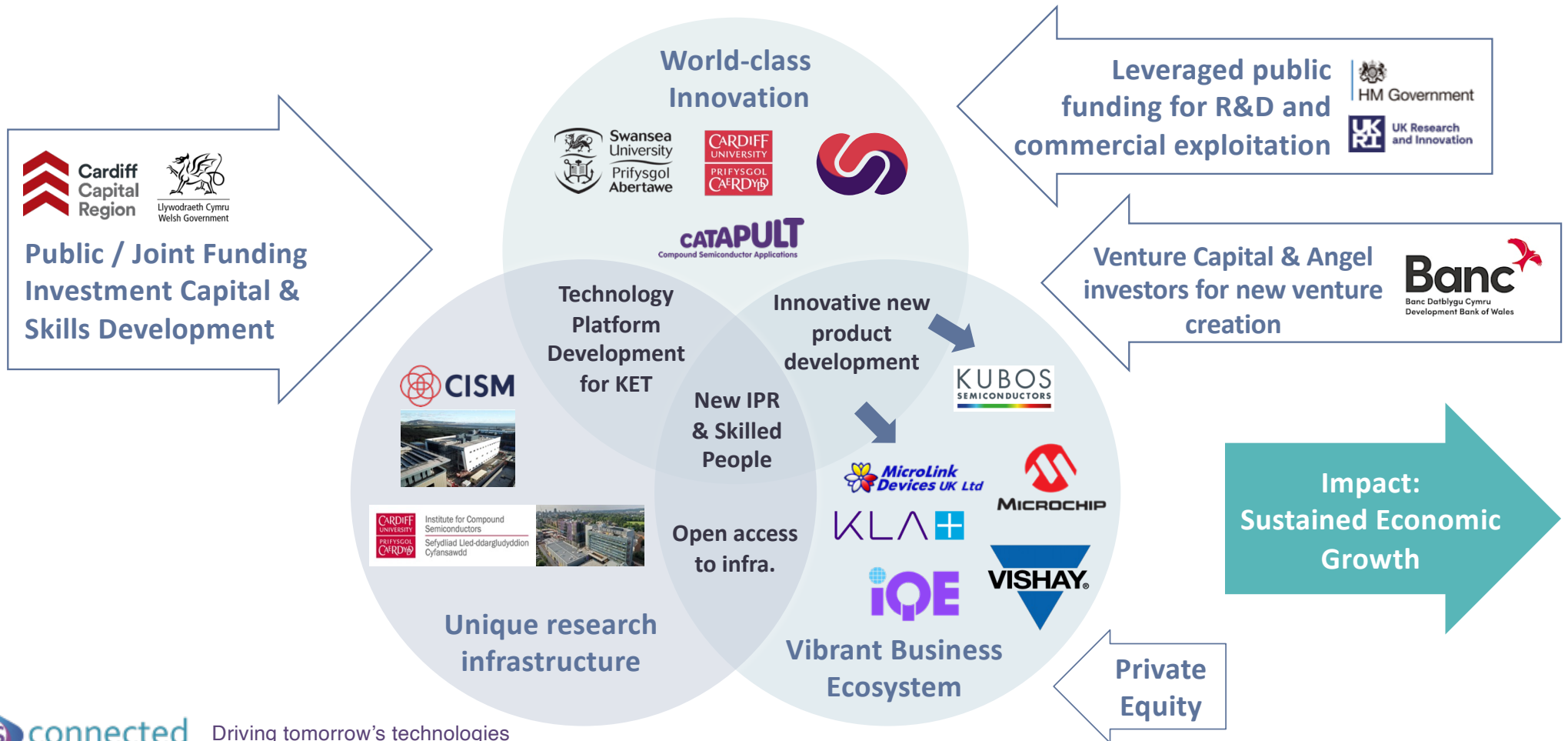
*Establish CR&D eco-system & invest in research infrastructure*

*Expansion in manufacturing & Collaborative research*

*Build momentum, focus on further scaling. Develop expanding workforce and local supply chain*

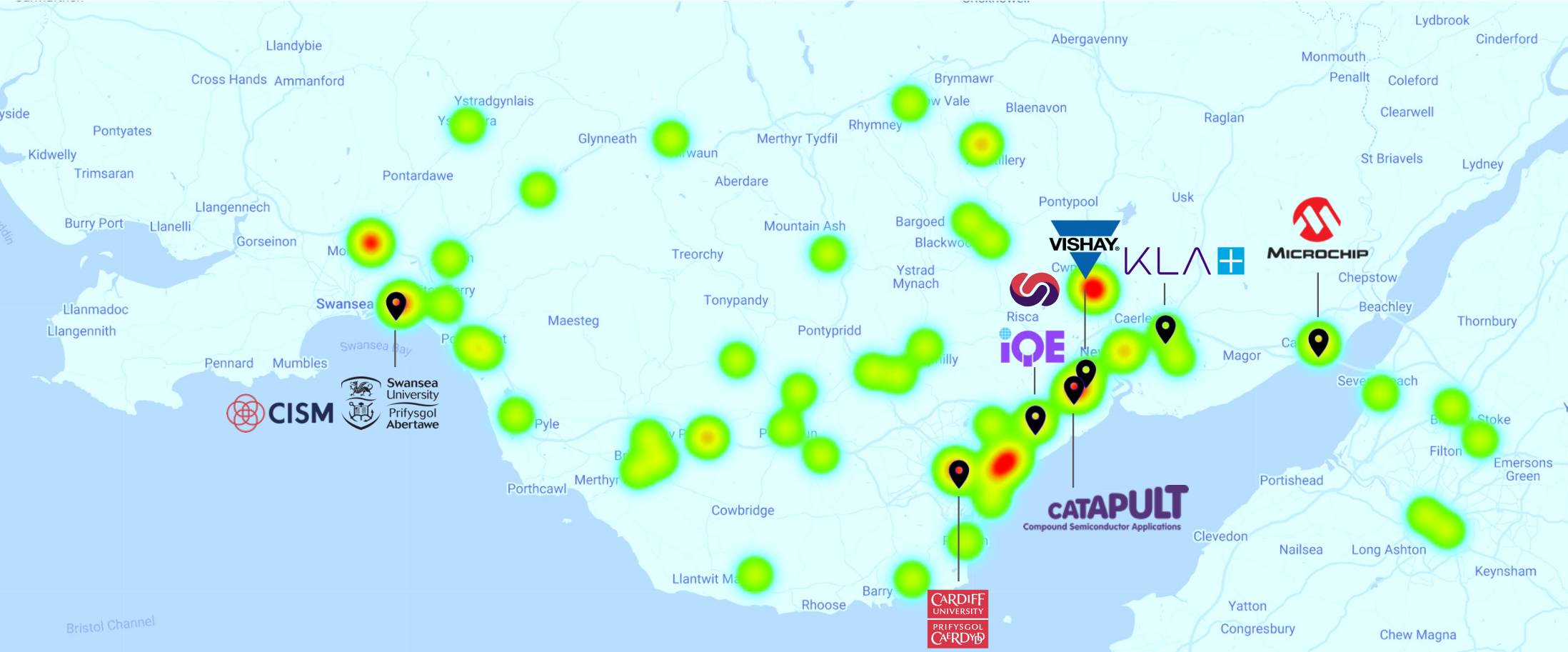


# The cluster contains all the key elements of a dynamic innovation and commercialization eco-system – it has ‘Critical Mass’



# Our economic footprint permeates across the region

## Value capture, shared prosperity, supply chain simplification & resilience



# Not-for-profit, for the *growth* of the cluster

## *The role of CSconnected Limited*

### Facilitate continued public financial support for semiconductors

- Consortium building & participation in major funding initiatives
- Interface and feedback of cluster view with government policy makers
- Measure economic impact, formulate and deliver message to benefactors



### Grow the local supply chain to increase value capture, skills & prosperity

- Interventions (grants) to support capacity and capability increases.
- Improved supplier network within cluster



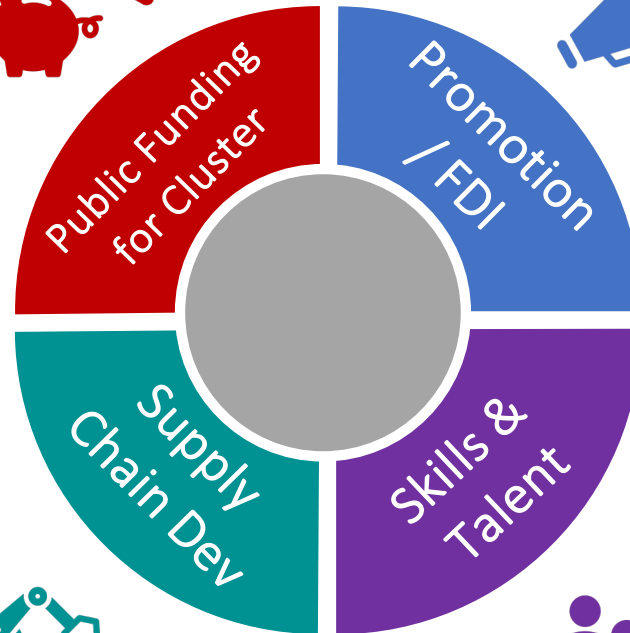
### Promote the benefits of the Cluster

- Seek out, introduce, facilitate and qualify new customers, investors and partners
- Maintain full-service marketing communications capabilities including collateral, website, events and PR
- Attract talent to the cluster



### Develop a pipeline of local talent to fuel cluster growth

- Narrow the skills gap
- Educational content creation
- Deployment of targeted outreach activities through partner network



**Thank you!**

[www.csconnected.com](http://www.csconnected.com)